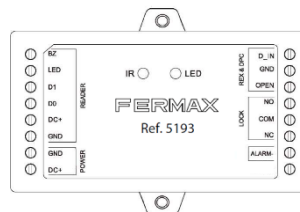


WIEGAND 1 DOOR WIFI MINI CONTROLLER

User Manual - APP EN



Description

The wifi MINI controllers allow you to connect to a network Wi-Fi with an internet connection to take advantage of the additional functions available on the device. This connection is made via the app free TUYA Smart available in both the Play Store and the App Store.



Tuya Smart



Available on the
App Store



GET IT ON
Google Play

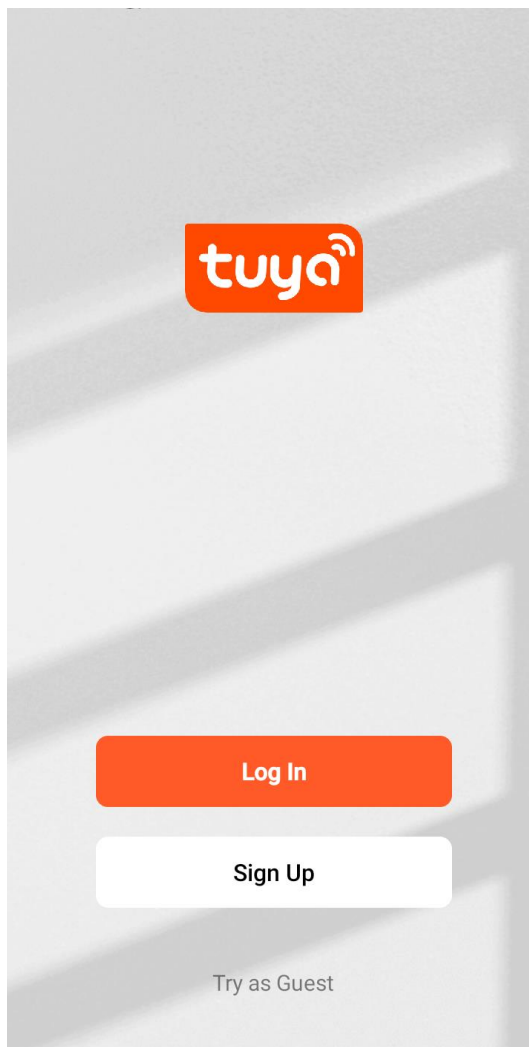
Features

The functions main of the wifi mini controller from the app are as follows:

- Remote DOOR RELEASE.
- Event log (valid and failed DOOR RELEASE openings).
- User management (registration/deregistration, creation of codes and/or identifiers for each user, temporary restrictions per user).
- Display of the door status (if there is a DOOR SENSOR connected to the wifi mini controller).
- Creation of temporary and single-use KEYPAD codes.
- Configuration of the wifi mini controller:
 - Remote DOOR RELEASE ENABLE
 - Relay operating mode
 - Pulse (setting of DOOR OPENING TIME)
 - Bistable
 - Duration of alarm (if ACTIVATED)
 - KEYPAD volume level

User registration and log in

1. Download and install the TUYA Smart app.
2. Open the app.



3. Register a user (if you do not have a TUYA user account).
 - a. If you register as a new user, a verification code will be sent to the e-mail address you have entered.
 - b. After entering the verification code, a password must be set.

Register

Spain

Email Address

☐ I agree to the [Privacy Policy User Agreement](#) and [Children's Privacy Statement](#)

Get Verification Code



Enter Verification Code

Verification code input fields

A verification code has been sent to your email [bordonez@fermax.com](#) Resend (56s)
[Didn't get a code?](#)

1	2	3	-
4	5	6	_
7	8	9	⌫
,	0	.	✓

Set Password

Password

Use 6-20 characters with a mix of letters and numbers

Done

4. Log in with the TUYA user account.



Log In

Spain ▼

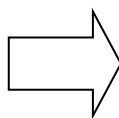
Please enter your account

Password

- ☐ I agree to the [Privacy Policy User Agreement](#) and [Children's Privacy Statement](#)

Log In

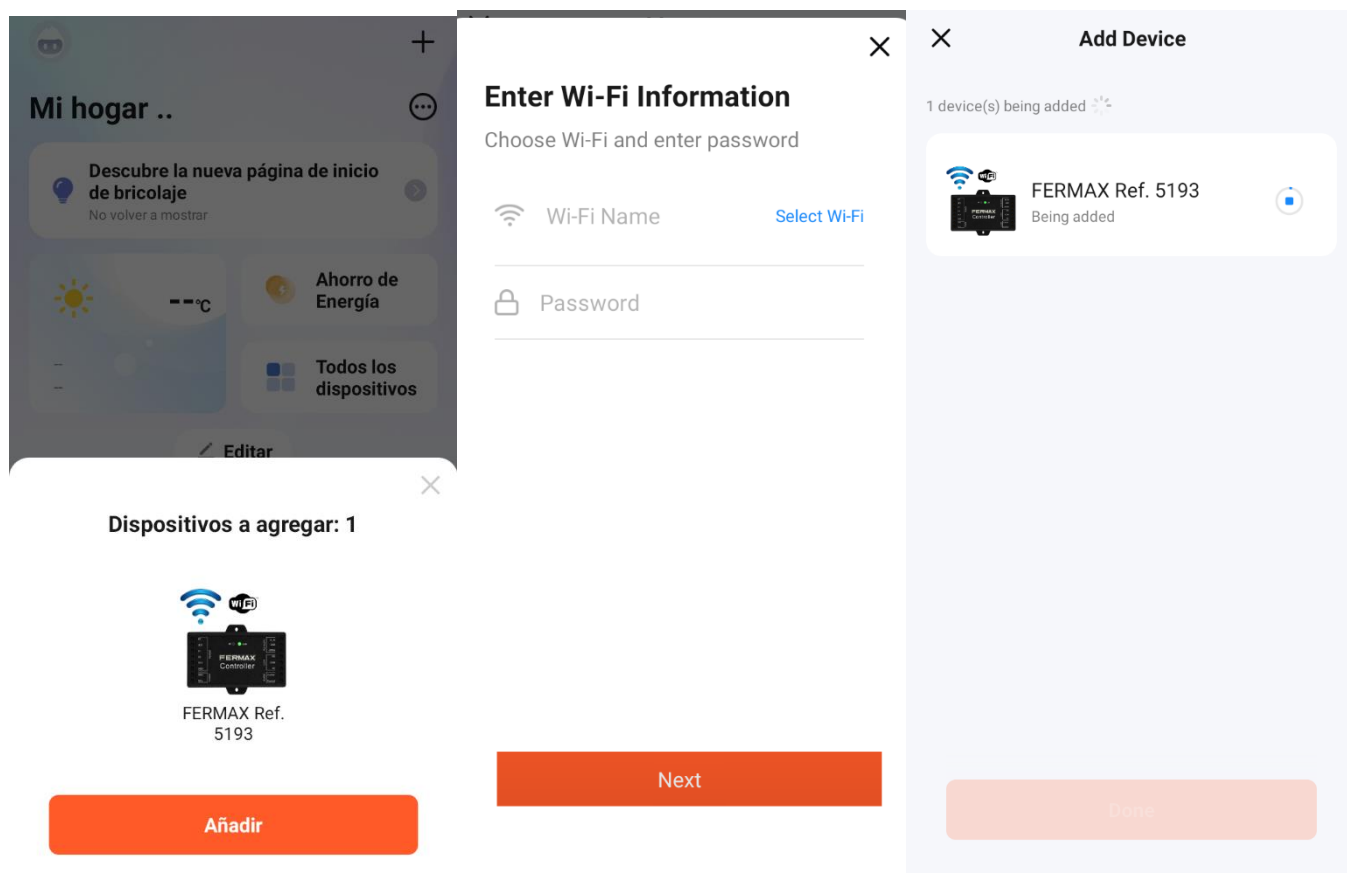
[Forgot Password](#)



Pairing

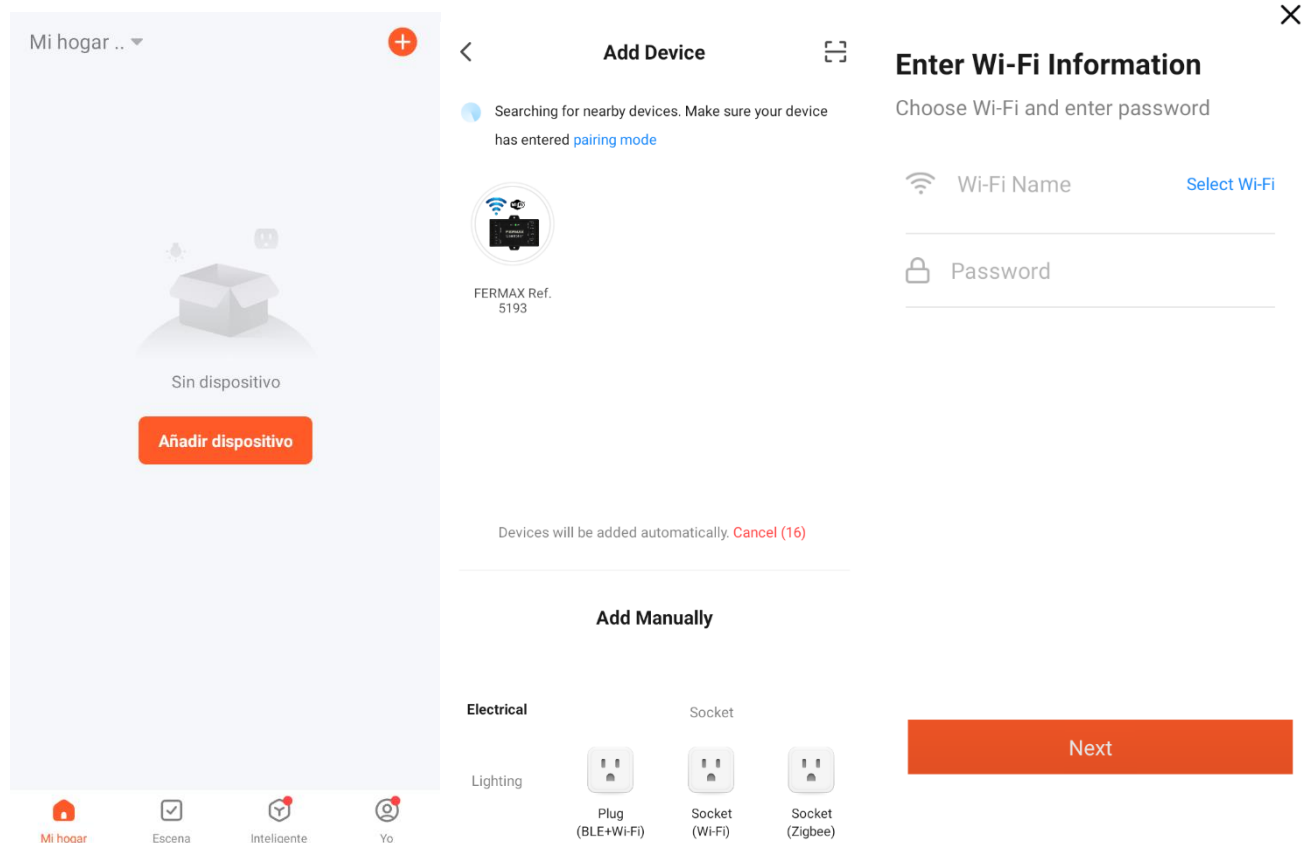
Method 1: Self-discovery

1. ACTIVATE connection the Wi-Fi on the smartphone/Tablet.
2. Open the TUYA Smart app.
3. POWER ON the wifi mini controller
4. A pop-up with the found device is displayed.
5. Select the Add button.
6. Enter the details of the network Wi-Fi to which the wifi mini controller is to be connected.
(network Wi-Fi must be 2.4GHz)
7. After a few seconds, the device is successfully added.
8. Click on Finished to go to the main page of the device.

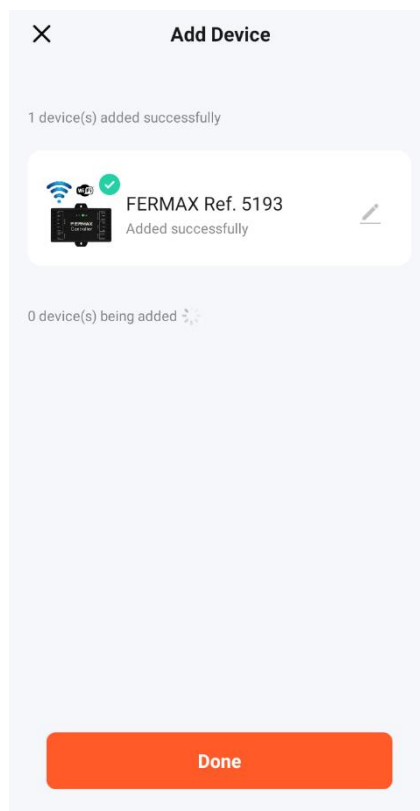


Method 2: Add manually

1. ACTIVATE connection the Wi-Fi on the smartphone/Tablet.
2. Open the TUYA Smart app.
3. POWER ON the wifi mini controller
4. Select the "Add device" option with the "+" button at the top right.
5. FERMAX device Ref. 5193 is displayed.
6. Select the device found.
7. Enter the details of the network Wi-Fi to which the wifi mini controller is to be connected.
(network Wi-Fi must be 2.4GHz)
8. After a few seconds, the device is successfully added.
9. Click on Finished to go to the main page of the device.



Using both methods, the app confirms that the device has been successfully paired:



Main SCREEN

The following options are available on the main SCREEN of the device:



1. Device name (editable)
2. Device SETTINGS menu
3. DOOR RELEASE Remote door release
4. Access name (editable)
5. Condition of the door
6. Wi-Fi signal connection level of the device
7. Event log
8. User menu
9. Temporary code creation menu
10. Configuration of the wifi mini controller

Device name

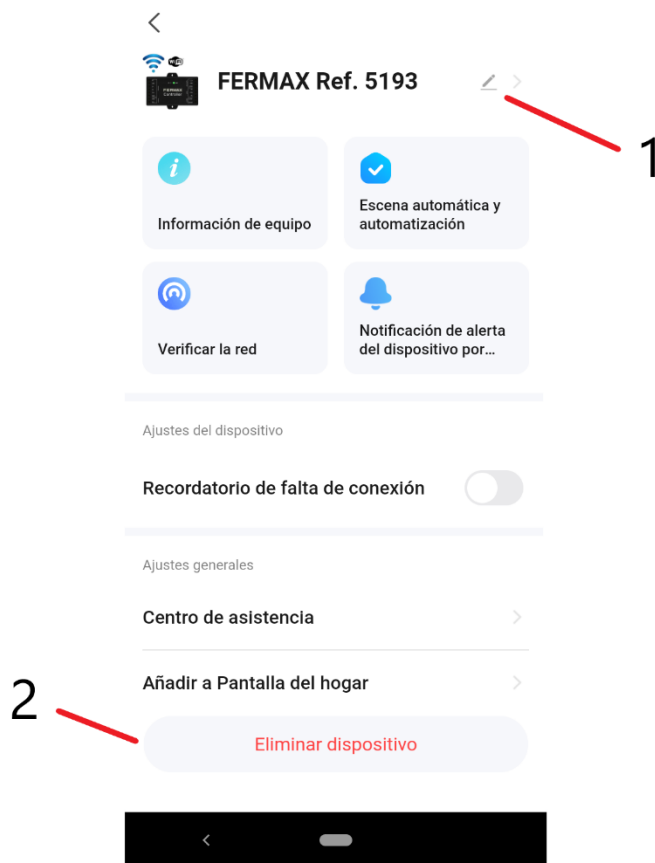
Device name assigned by the installer.

It will be necessary to assign it a name in order to distinguish and locate the device among the different wifi mini controllers installed by the same TUYA user (installer).

Device SETTINGS menu

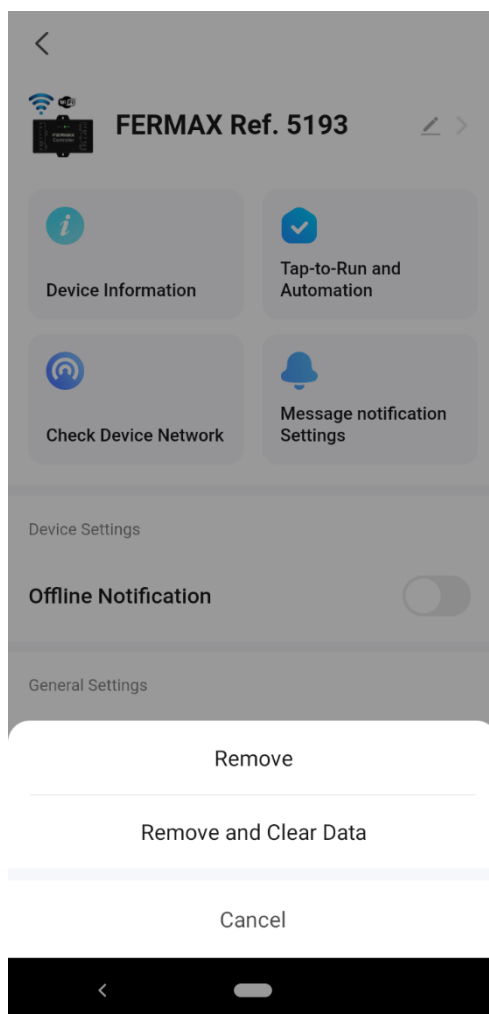
This menu has the following 2 functions:

1. Change the name of the device.
2. Unpair the device from the network Wi-Fi .



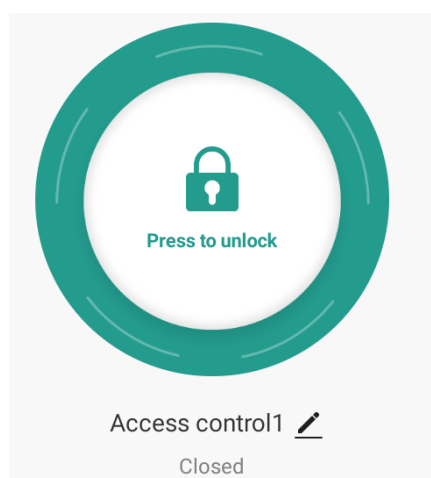
If it is decided to unpair the device, there are two 2 options:

1. **Unpair:** unpairs from the Wi-Fi network while keeping users and settings.
2. **Unlink and clear all data:** unpairs from the network Wi-Fi and removes users and settings made via the app.



DOOR RELEASE Remote door release

Option to perform a direct DOOR RELEASE from the app.



The icon must be held down for the door to open.

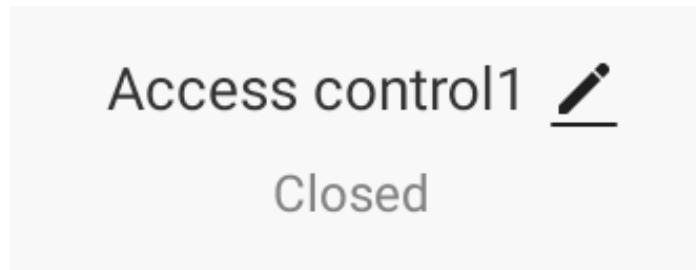
REMARKS:

This function must be **ENABLE** by the installer. You can check the details the *inwifi mini controller configuration* section.

Access name

Text identifying the access. It is customisable and can be displayed for each movement in the event history.

The default value is *Access Control1*.



Condition of the door

For the app to show the real status of the door, a must be connected to the wifi mini controller magnetic door detector (ref. 1076) or a DOOR CONTACT (ref. 2913 / ref. 7776) .

Once the DOOR SENSOR is connected, you must **ACTIVATE** the function from the IR remote control as indicated in the section *OPEN DOOR DETECTION SETTINGS* in the printed manual.

If the function is not **ACTIVATED**, the status of the door will change in the app depending on the relay status of the wifi mini controller.

If the bistable mode is set, every time a DOOR RELEASE is performed, the status of the door changes.

If pulse mode is set, the door status will change to "open" during the set relay activation time.

User menu

This menu allows you to manage the users registered from the app.

This user database is independent of the users registered locally via the master card or the IR KEYPAD.

There are 3 user roles with different permissions:

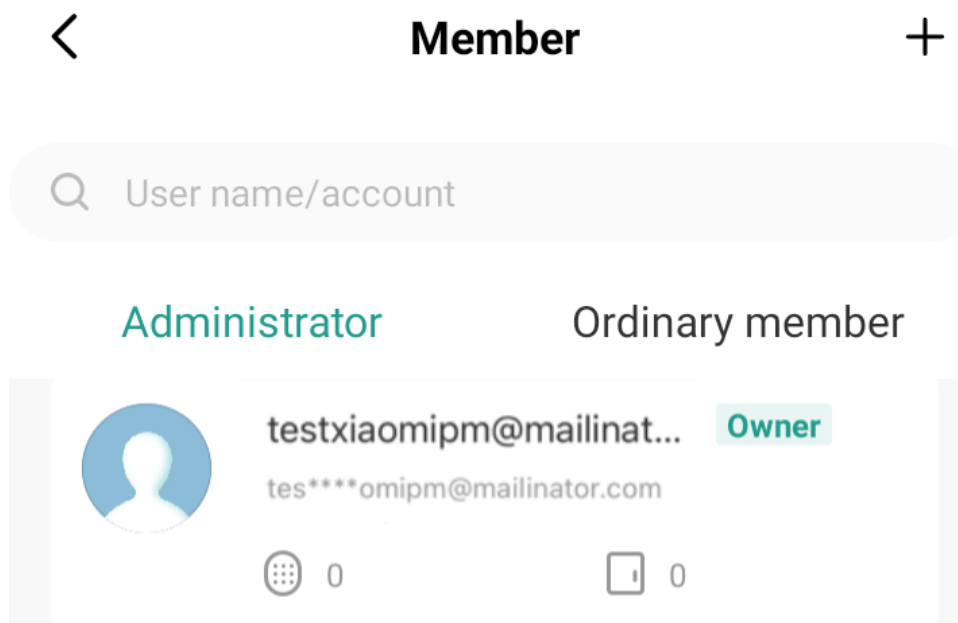
Permits	OWNER	ADMINISTRATOR	USER
No. of users	1 per controller	Up to 500	Up to 500
User management	UNREGISTER/UNREGISTER administrators and users	UNREGISTER REGISTER/UNREGISTER users	X
Credential management	✓	✓	X
Temporary code management	✓	✓	X
Event log	✓	✓	✓ (only those of your user)
Configuration	✓	✓	X

Once the user menu is accessed, the following is allowed:

- Add new user
- Consult the list of Administrators of the wifi mini controller
- Consult the LISTwifi mini controller USER

In the list user/administratoryou can see the user summary:

- Which administrator is the owner.
- Associated TUYA user account (hidden for data protection reasons)
- No. of cards/key rings registered for the user
- No. of KEYPAD codes registered to user



Add a user

When adding a new user, you must enter:

- A name.
- A user account (optional).
- Select user type.
 - If the owner registers users, you can choose between assigning them as administrator or standard user.
 - If you REGISTER an administrator, you can only assign him/her as a standard user.

The user account is required when REGISTERING a user with administrator role.

Additionally, this user account will be useful for the standard user who wants to open the door remotely from the app (if the option is enabled by the administrator/owner).

CancelAdd userNext step

User name

Please input

Country/area

Spain +34 >

User account

Input e-mail

Administrator

☒

Administrators can manage devices and members,
but members can only read unlock & alarm records

After REGISTERING a user, it is allowed:

- To add KEYPAD CODES.
- To add a card/key ring.
- Configure the period of validity for which the user will be allowed access.

KEYPAD CODES ADDING

A customised 6-digit KEYPAD code can be entered.

You can select the "Randomly generate" option to have the app provide a random 6-digit code.

The code name is optional.

Cancel
Save

How to add code

Please save the code in time, the App will no longer display it

Please input 6 digitals code

Randomly generated

Code name
Please input (optional)

1	2 ABC	3 DEF
4 GHI	5 JKL	6 MNO
7 PQRS	8 TUV	9 WXYZ
,	0	⌫

REMARKS:

- The code is 100% remote, it does not require any additional operation in front of the reader.
- KEYPAD codes are always 6 digits long.
- For security reasons the KEYPAD codes are not displayed in the app. If you need to have the codes visible at all times, you can assign a code name corresponding to the 6 digits.

CARDS/KEY FOBS ADDING

It is possible to register identifiers compatible with the reader's proximity technology connected to the wifi mini controller.

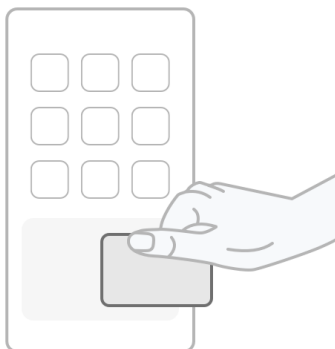
At the start of the enrolment process, the app allows you to bring the desired identifier close to the reader for 60 seconds. If the reader does not detect any identifier, the app will display an error message.

In case of success, a name can be assigned to the registered identifier.



How to add the card

Put card on recognition area as shown in the figure. Do not remove the card until the reader indicates that the card is added



Start add



Temporary restrictions

It is possible to configure a period of validity in which the user will be authorised to open the door by means of the credential(s) he/she has registered.

This time restriction shall be adjusted in accordance with the following:

- Start date (day, month and year) and start time.
- End date (day, month and year) and start time.
- Timetable

The timetable corresponds to the setting of the range of hours and day(s) of the week that will be authorised within the previously authorised period on the start and end date.

<

Effective time

Forever

☐

Customize

☒

Effective date

2025/03/06 10:33 >

Expiry date

Please select date >

Repeat

☒

Start time

08:00 >

End time

20:00 >

sun

mon

tue

wed

thu

fri

sat

Save

REMARKS:

This configuration can only be performed by the user with the role of Owner or Administrator.

Delete a user

When selecting a user from the list of users/administrators, it is possible to delete a user in order to permanently remove them from the wifi mini controller.

REMARKS:

- Only the owner and administrators can delete standard users.
- Only the owner can delete administrators.
- When a user is deleted, their associated credentials are removed.

Temporary code creation menu

This menu is used to manage the temporary KEYPAD codes.

There are two types of temporary KEYPAD codes:

1. **Temporary code.** A validity period is configured during which it will be valid.
Within the period of validity, it is possible to configure a timetable and select the days of the week when the restriction of the timetable will apply.
2. **One-time use code.** A 10-digit code randomly created and valid for the next 6 hours after its creation.is

<
Add temporary code
Log record

Code type

Cyclicity
Once

Please input 6 digitals code

Randomly generated

Code name Please input

Effective date 2025/03/06 10:34 >

Expiry date Please select date >

Repeat ☐

Save

In both cases, it is possible to share the generated KEYPAD code using the usual methods on mobile platforms, such as:

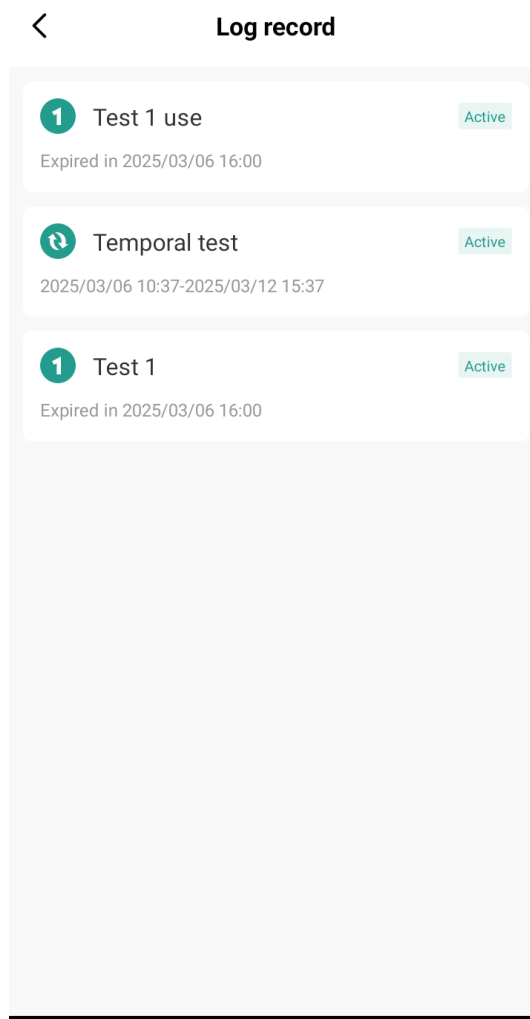
- SMS
- E-mail
- Copy (to clipboard for pasting into another app)
- Third-party APPLICATIONS (Whatsapp, Telegram, etc.)

REMARKS:

- Temporary access codes are not associated with any user.
- For security reasons the KEYPAD codes are not displayed in the app.
- The code name will be visible in the event history.
- Time codes require the wifi mini controller to have synchronised the date and time with the web server. When the wifi mini controller is powered, it beeps after 1-2 minutes. This sound indicates that the date and time has been successfully synchronised.

At the top right of the menu for creating temporary codes, there is a register of the different temporary codes generated in the wifi mini controller:

1. Activated codes: both temporary and single-use codes with temporary expiry information.
2. Invalid codes: codes that have expired and are no longer valid to open the door.



Event log

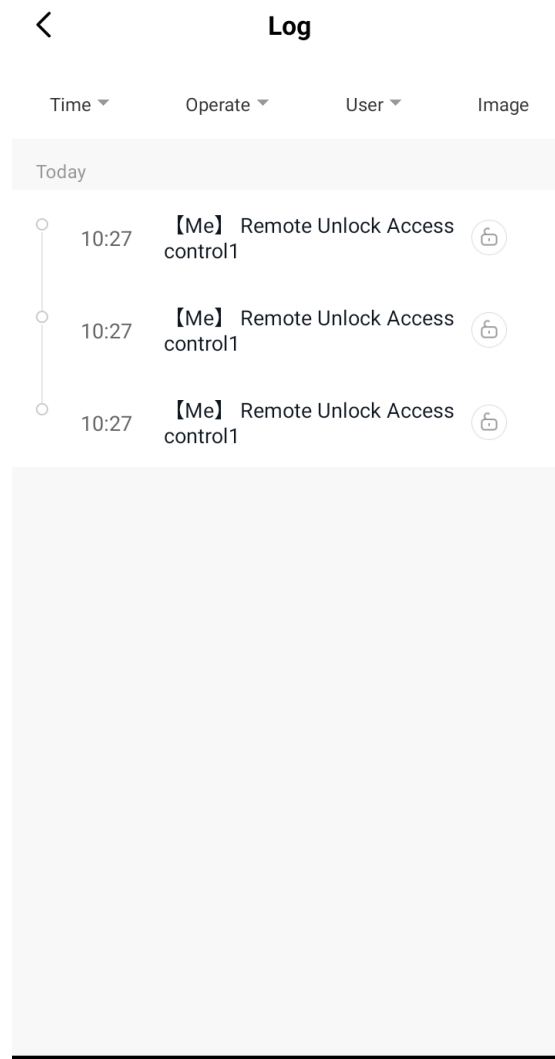
From the main SCREEN of the wifi mini controller, you can access the event history.

The following events can be found in this history:

- Remote DOOR RELEASE from the app
- DOOR RELEASE of a valid user (either by KEYPAD code or card/key fob)
- DOOR RELEASE by temporary code (temporary or one-time use)
- Unsuccessful attempt to open the door (either by keypad code or card/key fob).

In the upper part of the menu the filtering of events is allowed:

- Time: events of the last three days / last week / last month / customised / all
- EVENT TYPE: DOOR RELEASE SUCCESSFUL / DOOR RELEASE ATTEMPTED
- User: all users / any particular user
- Image: not applicable



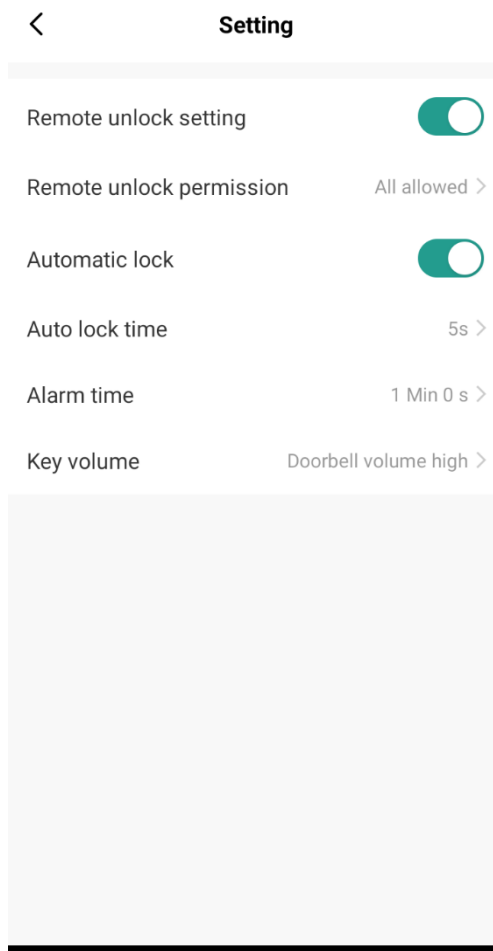
Configuration of the wifi mini controller

For users with owner/administrator role, there is the wifi mini controller setup menu to make some basic settings:

1. **ENABLE remote unlocking.**
 - a. This function allows you to open a door from the app.
 - b. Once enabled, this option can only be limited to administrator users for security reasons or to any user who is registered in the wifi mini controller and has the app installed.
2. Configuration of the **relay operating mode.**
 - a. If the option *Automatic lock after opening* is ACTIVATED, the relay will operate in pulse mode.
 - i. In this mode, a door unlocking time can be set between 1-99s.
 - b. If the option *Automatic lock after opening* is deactivated, the relay shall operate in bistable mode.
3. **Alarm duration.**

In case the 10 failed attempts alarm is ACTIVATED or the door sensor detection has been ENABLE, this option allows to configure the time in which the ALARM- output of the wifi mini controller will be active. This time is configurable between 1s and 3 minutes duration.
4. **KEYPAD volume.**

This function allows you to set the volume of the beeps made by the wifi mini controller itself. There is the possibility to mute the beeps (the beeps of the reader will continue to sound) or to keep the beeps of the wifi mini controller.



Additional SETTINGS

In case you have an alarm enabled, but do not wish to receive notifications push in the app, there is an option on the wifi mini controller for configuration via the IR KEYPAD:

Alarm notification configuration in the TUYA App:

Pasos de programación	Dial
1. Enter programming mode	* (Master CODE) # (Master Code) # (Master Code)
2. Configure the ENABLE to receive notifications	
a) Disabled (OFF)	6 7 #
b) ENABLE (ON)	6 8 # (default)
3. Exit programming mode	*

If during the pairing process of the wifi mini controller, the Tuya app does not detect the device, there is an available setting by means of the included IR remote to force the detection:

RESET Wi-Fi wifi mini controller:

Pasos de programación	Dial
1. Enter programming mode	* (Master CODE) # (Master Code) # (Master Code)
2. Reset Wi-Fi controller Enabled (ON)	9 (MASTER CODE) # (Master Code)
3. Exit programming mode	*

The Wi-Fi is also useful when reset you want to perform a change of ownership of the device at the same time as a reset of the users but the owner has not deleted the device and selected the option. *Unlink and wipe all data*

Keypad configuration ref. 5293 in Wiegand mode:

The keypad ref. 5293 is configured as standalone mode by default.

In order to use it with the wifi mini controller ref. 5293, it is required to be configured in Wiegand-26 mode:

Steps (from the keypad)	Dial
1. Enter programming mode	* (Master Code) # (by default 123456)
2. Setting the Wiegand 26 operation mode	8 1 #
3. Exit programming mode	*

EN. Technical publication of informative character edited by FERMAX ELECTRONICA S.A.U.

FERMAX ELECTRONICA, in its policy of constant improvement, reserves the right to modify the content of this document as well as the characteristics of the products referred to in it at any time and without prior notice.

Any modifications will be reflected in subsequent editions of this document.

For more information, visit: www.fermax.com

Contact: tec@fermax.com / www.fermax.com/contact



Avda. Tres Cruces, 133 - 46017 Valencia (Spain)

Telf. 96 317 80 00 - Fax 96 377 07 50

Export : 00 34 96 317 80 02tel.

www.fermax.com- fermax@fermax.com